

view from Regal Road looking east at site

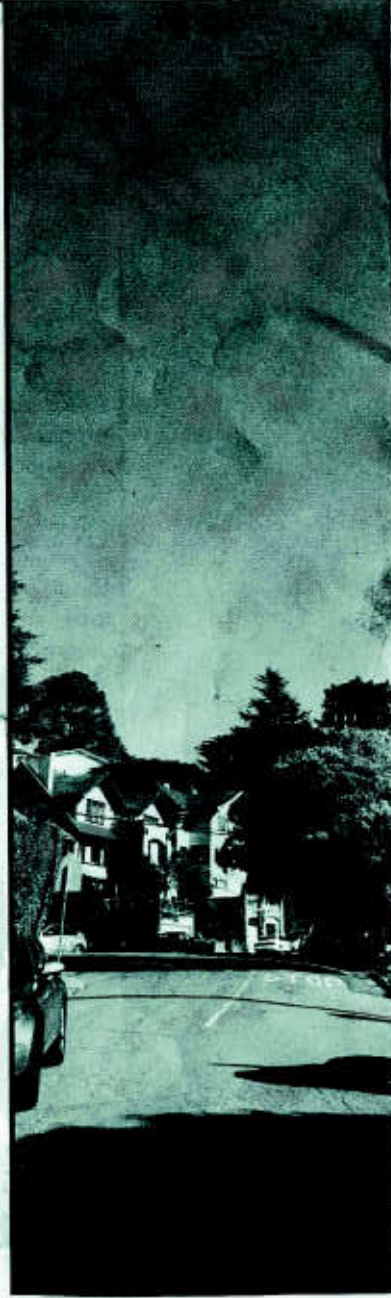
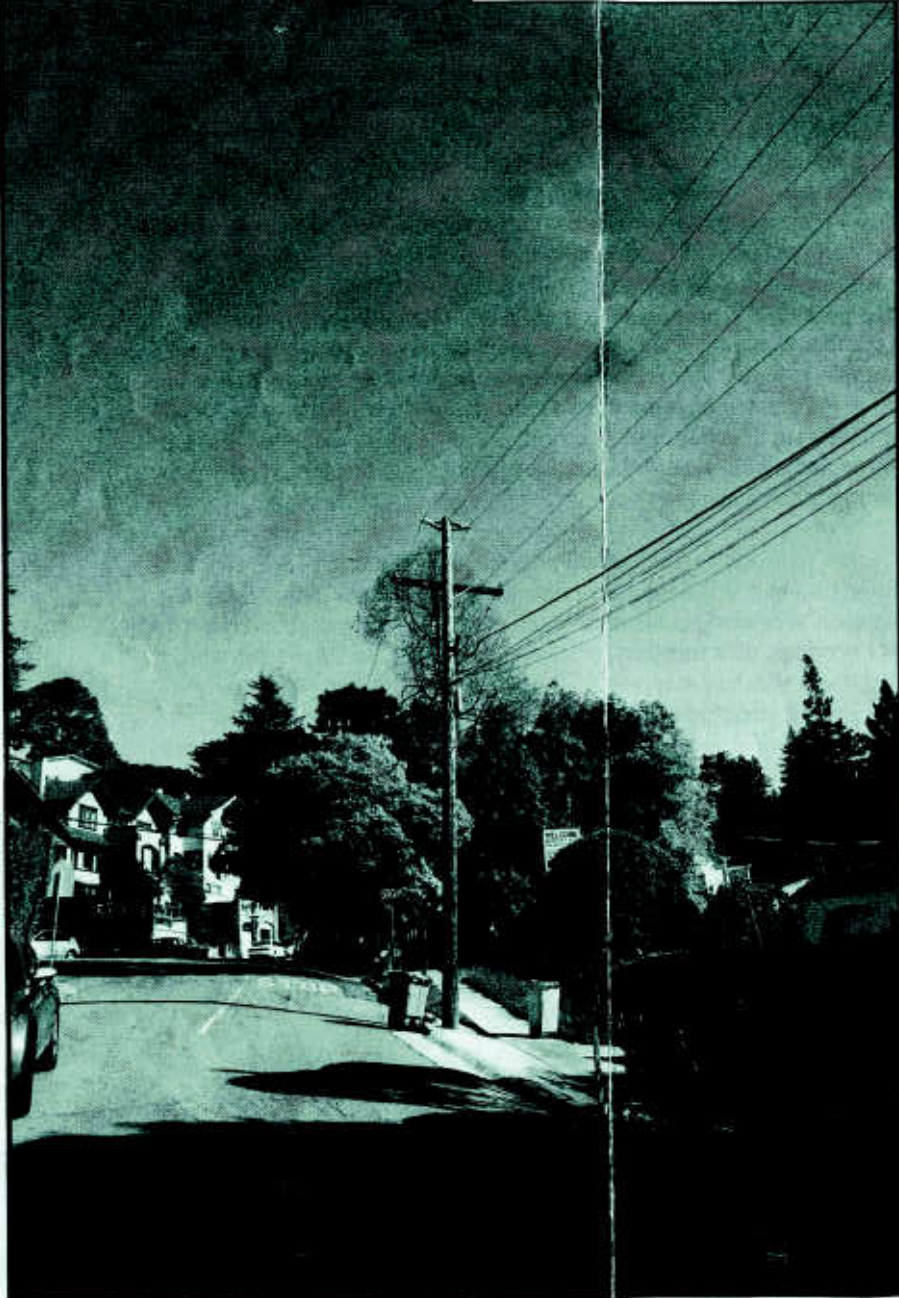


AT&T Wireless

862 Regal Road, Berkeley, CA
Oak Hills AT&T North Network Node 023B

Proposed

Existing



Proposed AT&T
Antenna

Proposed AT&T
Equipment

NOTICE OF PROPOSED AT&T WIRELESS INSTALLATION ON EXISTING UTILITY POLE

To: Owners & Occupants within 500' radius of 862 Regal Road in Berkeley

Site Information: Node 23

Address: Joint Utility Pole # 110159654
Public Right of Way
Near 862 Regal Road
Berkeley, CA 94708

Applicant

New Cingular Wireless PCS, LLC
Doing Business As "AT&T Mobility"

Contact Information

Matt Yergovich
ExteNet Real Estate Contractor
For AT&T Mobility
(415) 596-3474
myergo@gmail.com

AT&T Mobility proposes to install a wireless communication distributed antenna system ("DAS") node onto joint utility pole number 110159654 located in the public right of way near 862 Regal Road in Berkeley. AT&T proposes swap the existing pole for a new pole that is five-feet taller, and to add two panel antennas on top of the pole. The antennas are approximately two-feet long, ten-inches wide and six-inches deep. AT&T also proposes to mount two equipment boxes, an electrical meter, and a switch to the pole. One box will be mounted at about 17-feet high on the pole and will be two-feet long by two-feet wide and a foot and a half feet deep. At about 12-feet high on the pole AT&T proposes to mount an equipment box approximately four-feet long, a foot wide and a foot deep. Below that, at about ten-feet high on the pole, AT&T proposes to install an approximate one-foot tall by one-foot wide and four inches thick optical demarcation unit. At about eight-feet up the pole, AT&T proposes to mount a small switch and electricity meter approximately one-foot long, three-inches deep and eight-inches wide. All equipment will be painted brown to match the existing utility pole.

This node is part of a greater DAS that will provide and enhance AT&T third and fourth generation (3G and 4G) wireless voice and data service to the surrounding area. These wireless services include mobile telephone service, wireless broadband, emergency 911 services, data transfers, electronic mail, internet, web browsing, wireless applications, wireless mapping and video streaming. The installation of this node will improve wireless communications and safety in the area and allow you to better enjoy AT&T wireless service. There are no acceptable alternative locations for this equipment that would achieve AT&T's wireless coverage objectives. Feel free to contact AT&T's permitting specialist Matt Yergovich at myergo@gmail.com or (415) 596-3474 should you have any questions. Thank you.